



Flat 20

Parkside Avenue, Acer Heights | | London | SE10 8GZ

£1,850 Per Month

 cityrelay

Flat 20

Parkside Avenue, Acer Heights |
London | SE10 8GZ
£1,850 Per Month

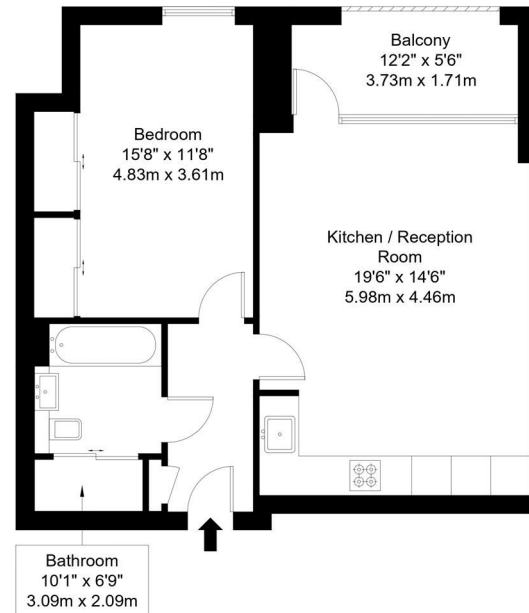
Situated in the heart of SE10, this beautifully presented one-bedroom apartment offers contemporary living with stylish interiors, excellent resident facilities and a private outdoor space.

- Stylish one double bedroom apartment
- Private balcony/outdoor space
- Contemporary bathroom suite
- Spacious open-plan living area
- Modern integrated kitchen
- Residents' gym and fitness studio



Parkside Avenue, SE10 8GZ

Approx Gross Internal Area = 55.17 sq m / 594 sq ft
Balcony = 6.12 sq m / 66 sq ft
Total = 61.29 sq m / 660 sq ft



Second Floor

Ref :

Copyright **BLEU PLAN**

The Floor plan is not to scale and measurements and areas shown are approximate and therefore should be used for illustrative purposes only. The plan has been prepared in accordance with the RICS code of Measuring Practice and whilst we have confidence in the information produced it must not be relied on. Maximum lengths and widths are represented on the floor plan. If there is any aspect of particular importance, you should carry out or commission your own inspection of the property.
Copyright @ BLEUPLAN

Energy Efficiency Rating		Current	Potential
<i>Very energy efficient - lower running costs</i>			
(92 plus) A			
(81-91) B		86	86
(69-80) C			
(55-68) D			
(39-54) E			
(21-38) F			
(1-20) G			
<i>Not energy efficient - higher running costs</i>			
England & Wales		EU Directive 2002/91/EC	

Council Tax Band B
EPC Rating B

10 Cromwell Place
London
SW7 2JN
02038 650611
lettings@cityrelay.com